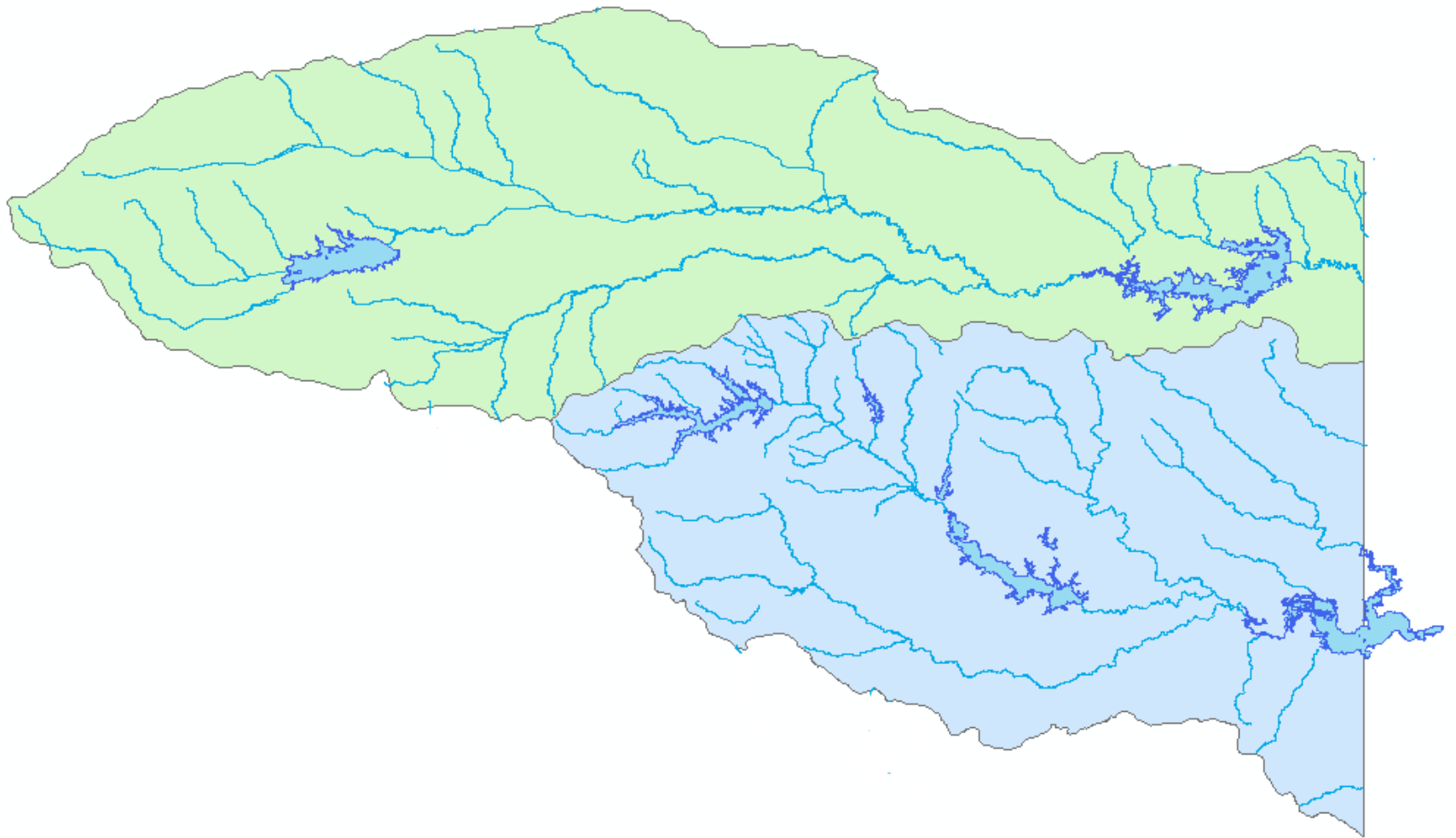


**Cypress Basin  
TPWD Fisheries Update  
2022**



**Tim Bister  
Texas Parks and Wildlife  
Inland Fisheries Division  
Marshall, TX**

# Sulphur and Cypress Basins

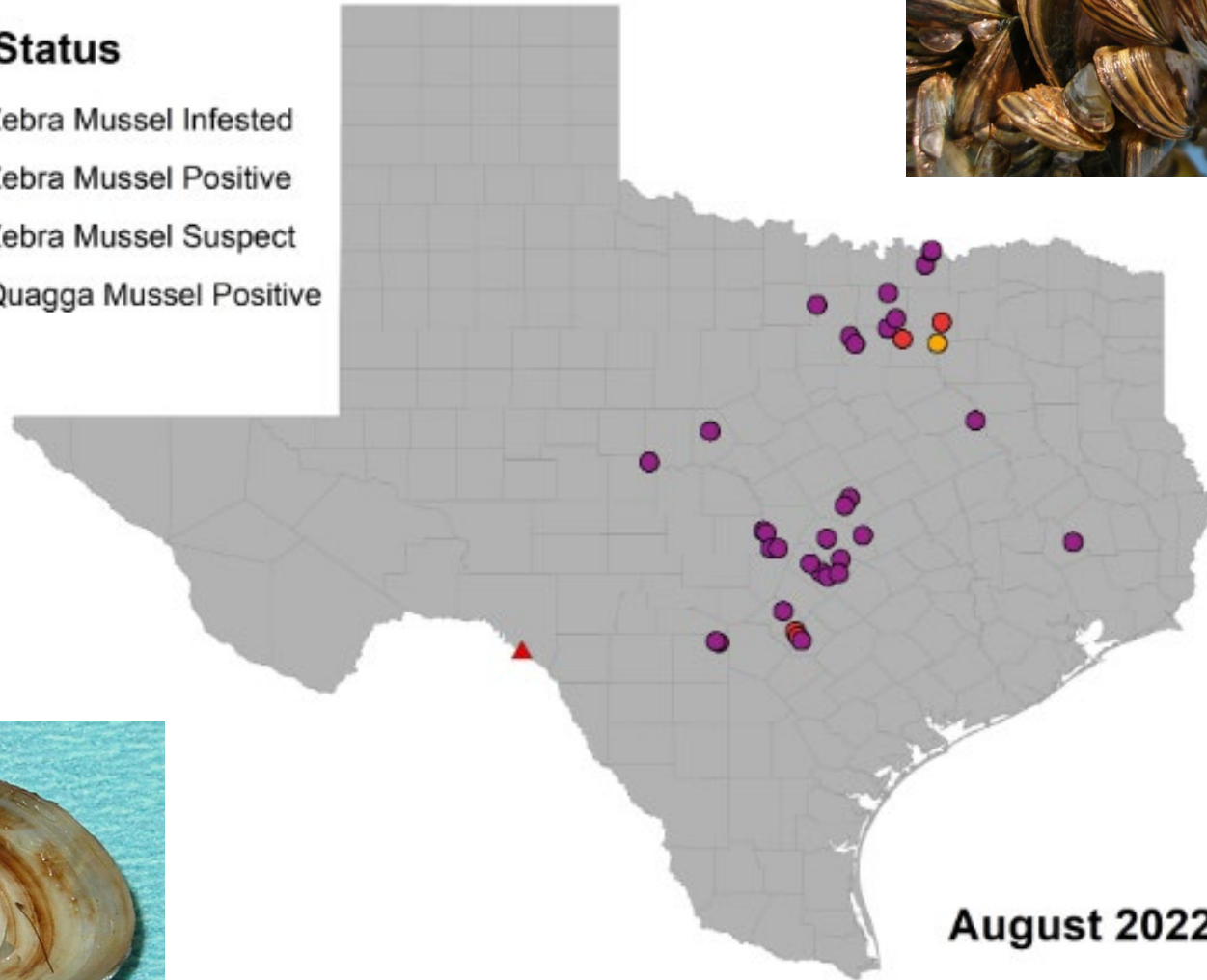


# Invasive Mussels



## Lake Status

- Zebra Mussel Infested
- Zebra Mussel Positive
- Zebra Mussel Suspect
- ▲ Quagga Mussel Positive



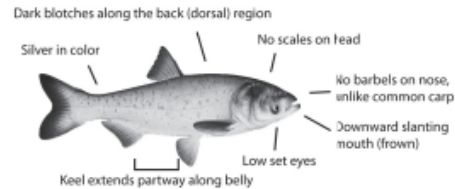
# ATTENTION ANGLERS!



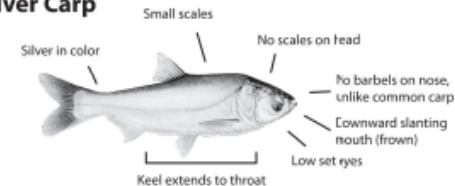
Invasive carp (bighead and silver carp) not native to the U.S. are known to be present in this area and pose a threat to surrounding waters. Young invasive carp can be easily confused with gizzard shad commonly collected as baitfish. It is unlawful to leave these waters with live non-game fishes.

**DO NOT TAKE INVASIVE CARP FOR USE ELSEWHERE AS BAITFISH!**

## Bighead Carp



## Silver Carp



## WHAT SHOULD YOU DO?

- Learn to identify bighead and silver carp.
- Never release live fish from one body of water into another—including baitfish.
- Report sightings:
  - Note exact location
  - Take photos if possible
  - Report to:  
[aquaticinvasives@tpwd.Texas.gov](mailto:aquaticinvasives@tpwd.Texas.gov)
- Learn more at: [www.TexasInvasives.org](http://www.TexasInvasives.org)

## Juvenile invasive carp appear similar to shad



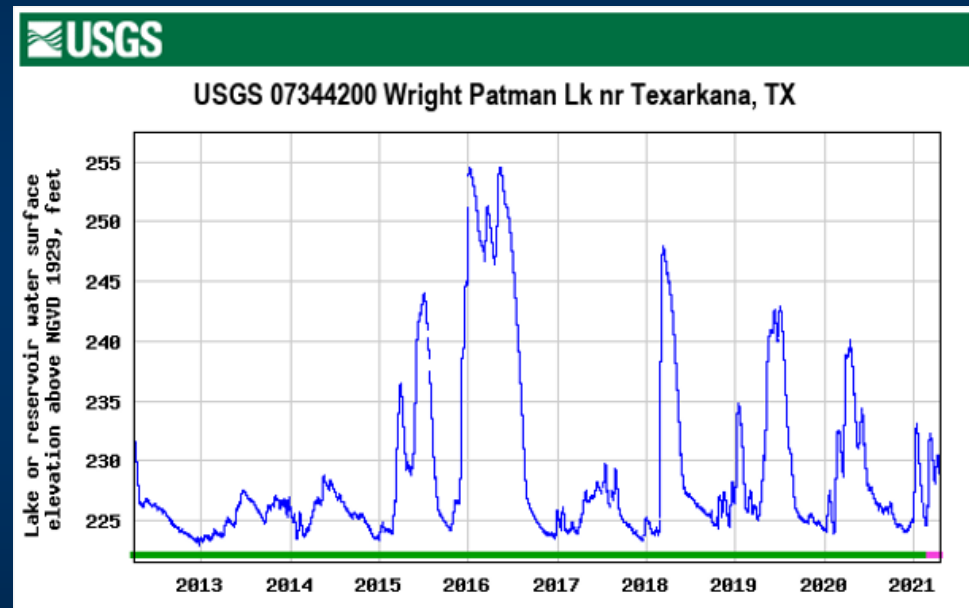
# Jim Chapman Lake (Cooper)

- **Alligatorweed**
- **Hydrilla**
  - **Present but coverage very low**
- **Monitor twice/year for zebra mussels**



# Lake Wright Patman

- Alligatorweed and Hydrilla
  - Trace amounts
- Water hyacinth
  - Not observed since 2015
- Giant salvinia
  - 2012 infestation
  - Eliminated

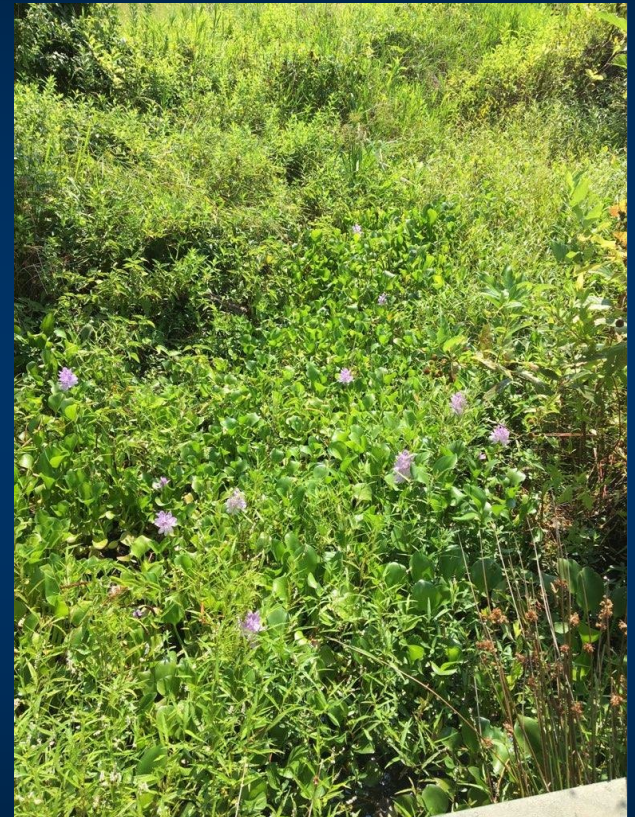


# Lake Cypress Springs

- **Alligatorweed**
  - **Stable trace amounts**
- **Hydrilla**
  - **None detected in recent years**
- **FCWD native aquatic plant nursery**

# Lake Bob Sandlin

- Hydrilla last detected in 2016
- Waterhyacinth
  - Small amounts found each year
  - Requires routine maintenance treatment
- Alligatorweed
  - Trace amount





# Lake Bob Sandlin - Alligatorweed



# Lake Welsh

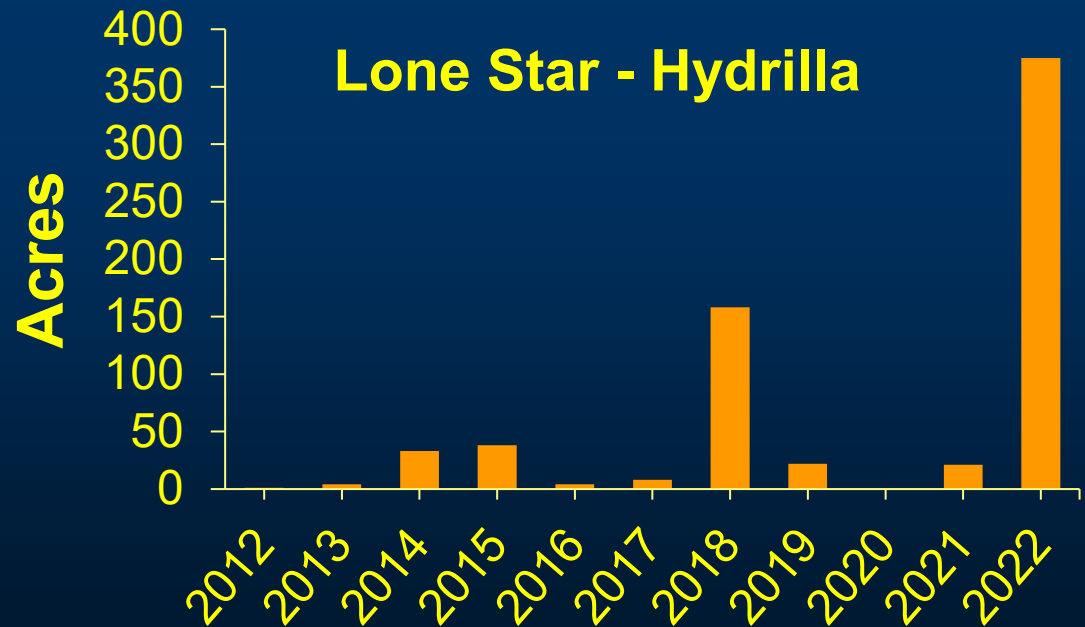
- **Hydrilla**
  - **Stable coverage**
  - **Hot summer/water suppresses growth**
- **Alligatorweed**
  - **Consistent coverage**
  - **Fleabeetles released in 2021**

# Lake Gilmer

- Hydrilla – present and stable
- Alligatorweed – trace amount
- Giant salvinia
  - Repeated introductions
  - Coverage was low
  - Treatments in March and October 2022

# Ellison Creek Reservoir (Lone Star)

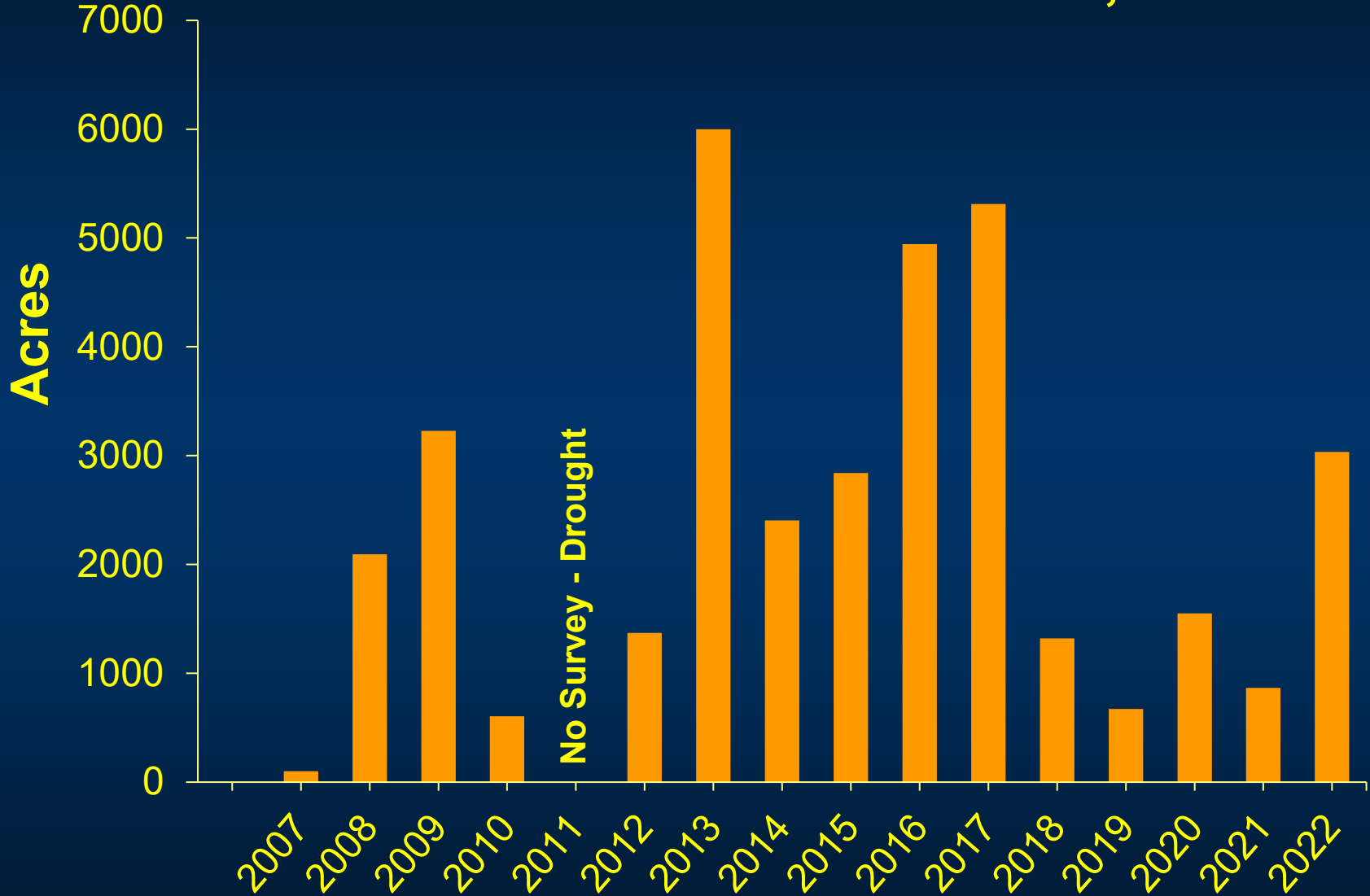
- **Giant Salvinia - established**
  - Herbicide treatments by TPWD (47 acres in 2022)
- **Alligatorweed**
  - Stable
- **Hydrilla**
  - 27% Coverage



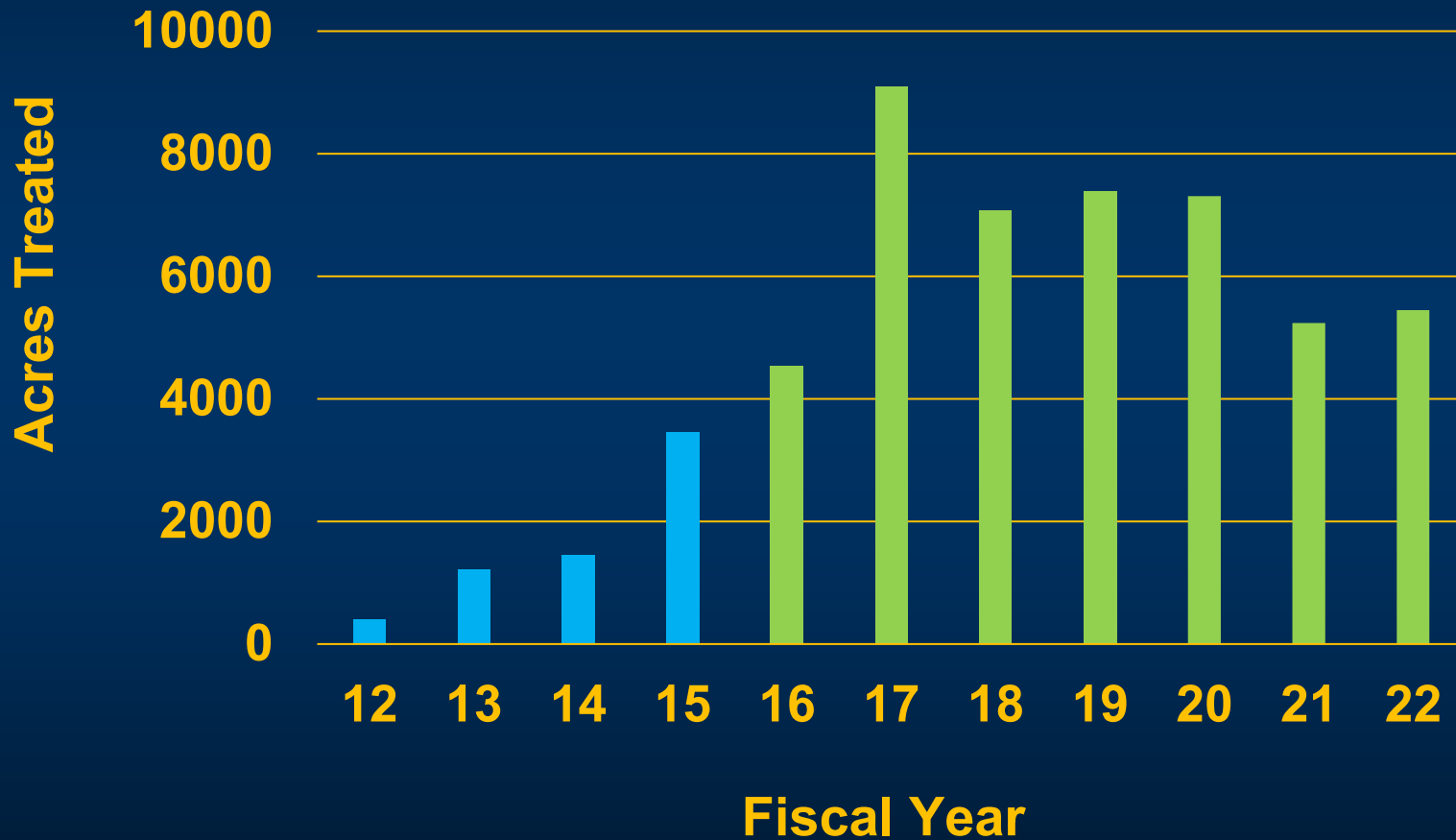
# Lake O' the Pines

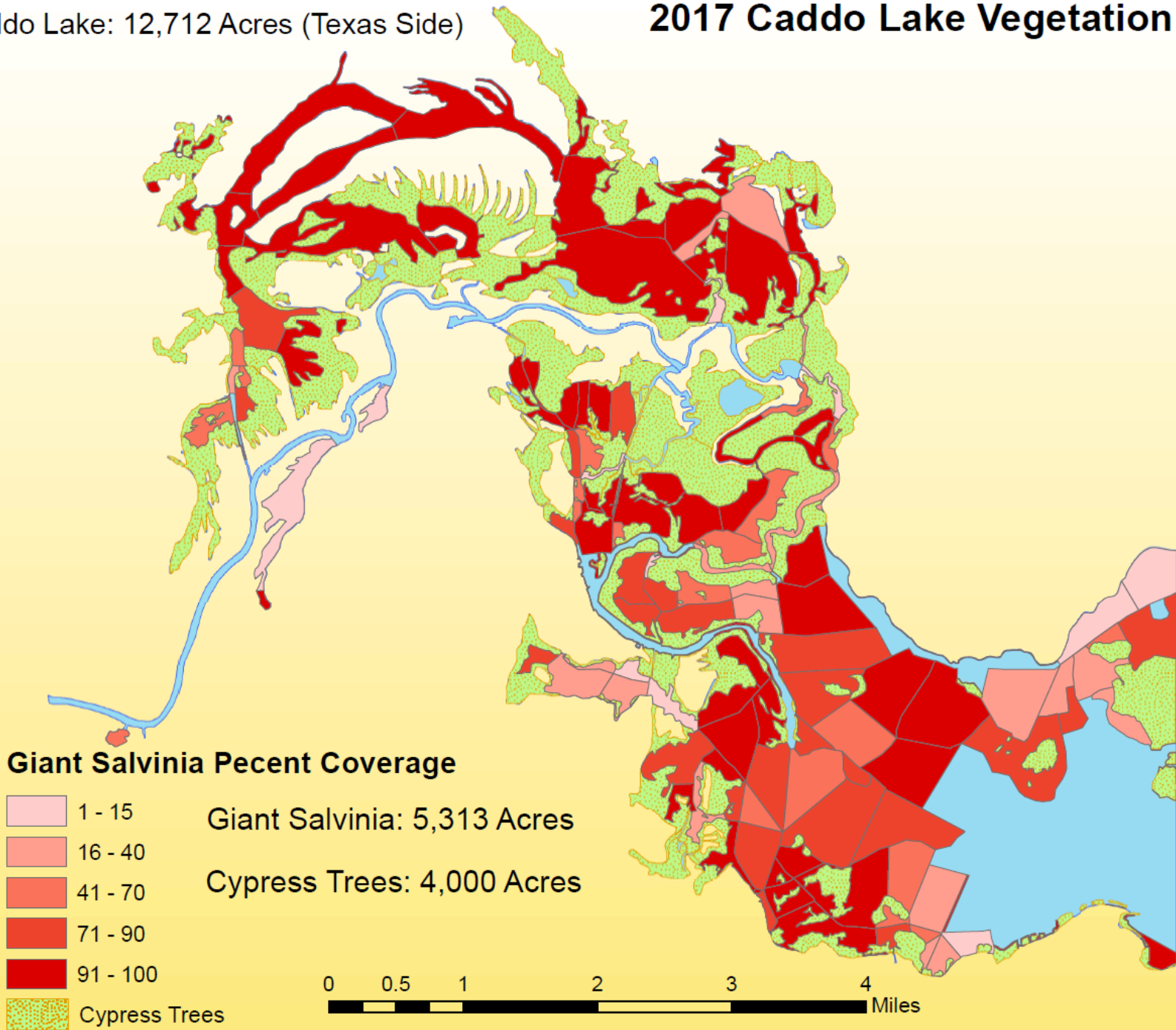
- **Hydrilla**
  - Variable coverage – no access issues
- **Water hyacinth**
  - Coverage low in recent years
- **Alligatorweed**
  - Present
- **Giant Salvinia**
  - Expanding – periodic herbicide to control
  - Aerial treatment – hard to access areas

# Giant Salvinia - Caddo Lake, TX



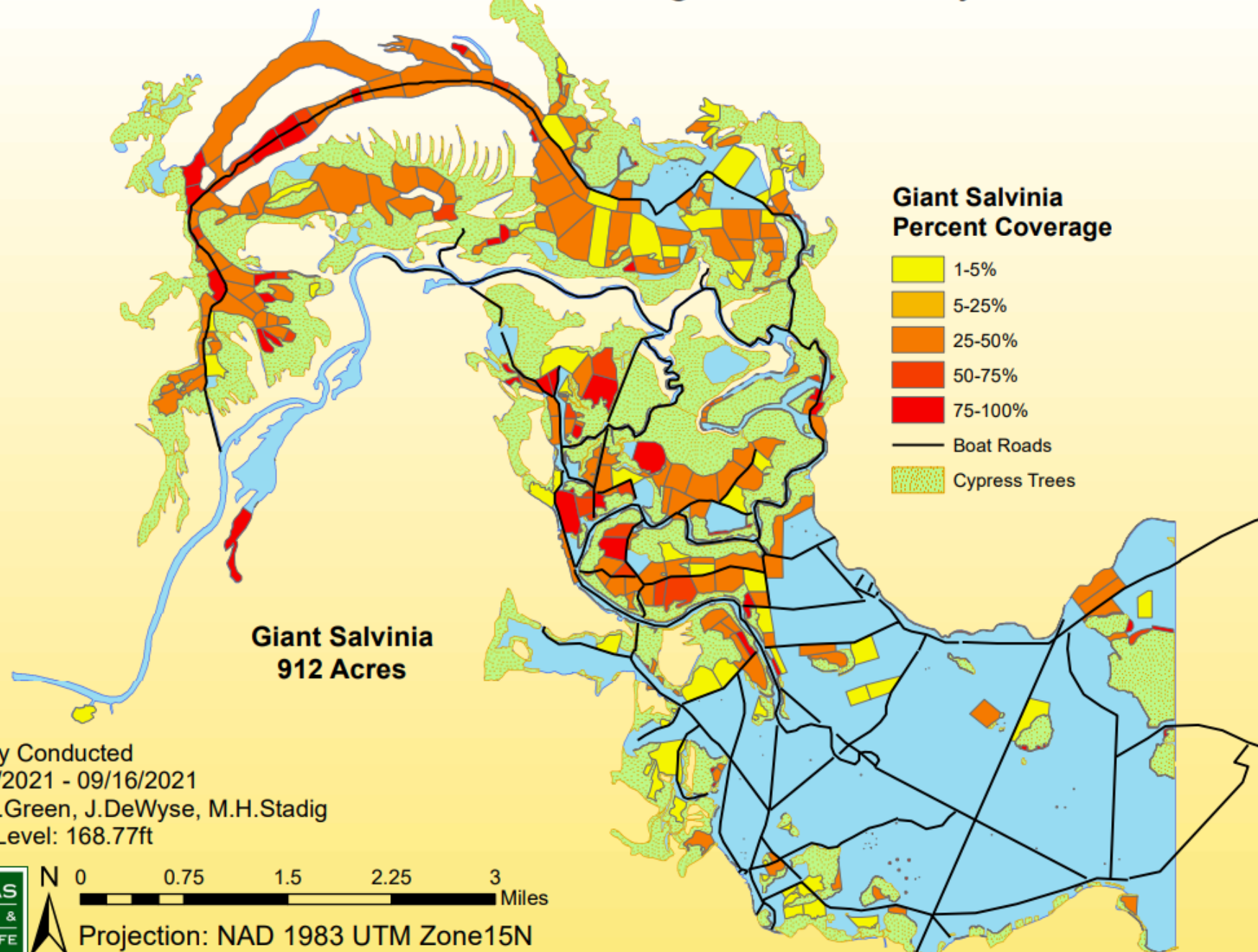
# Herbicide Treatments At Caddo Lake







# 2021 Caddo Lake Vegetation Survey



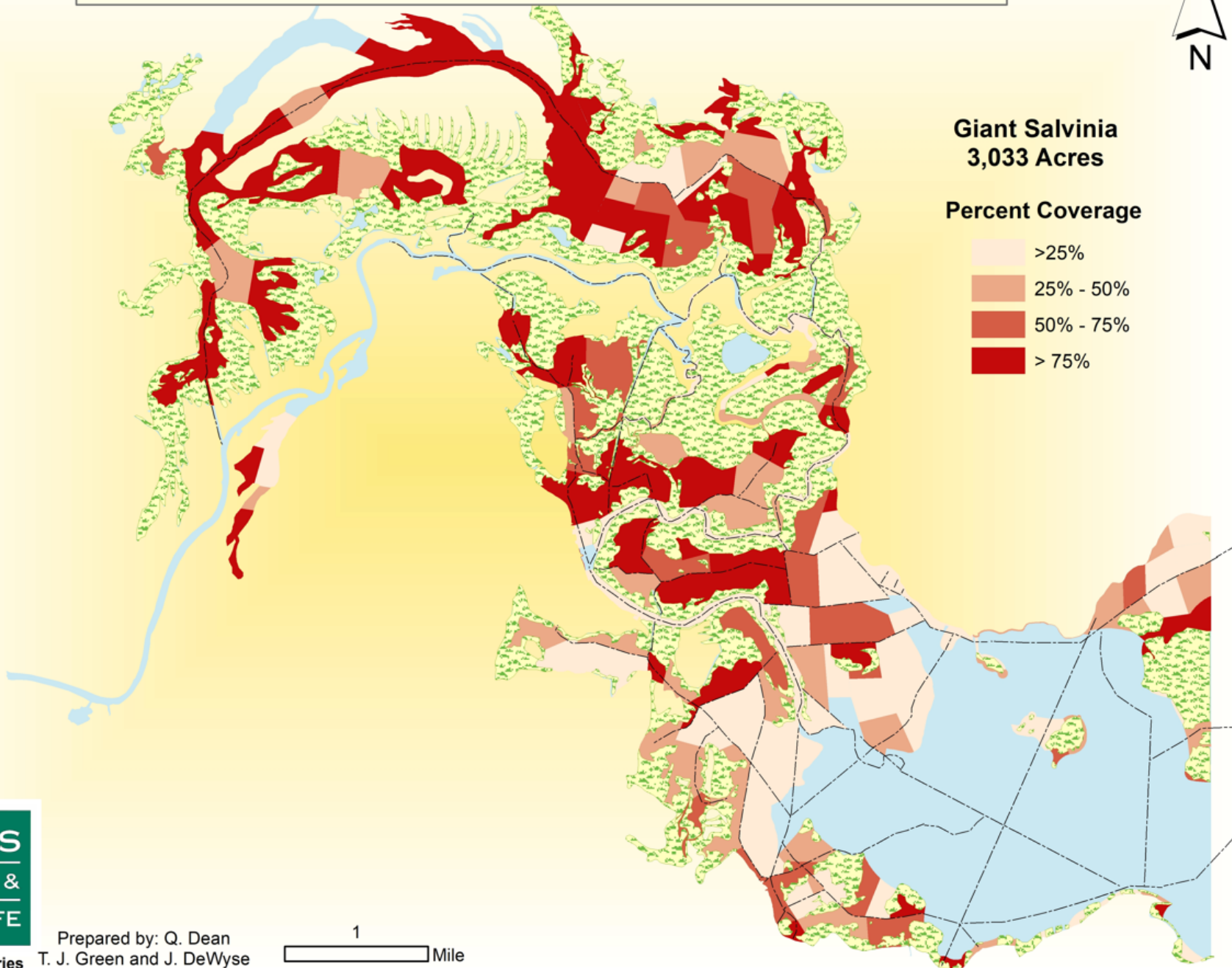
Survey Conducted  
09/08/2021 - 09/16/2021  
by T.J.Green, J.DeWyse, M.H.Stadig  
Lake Level: 168.77ft

TEXAS  
PARKS &  
WILDLIFE

N 0 0.75 1.5 2.25 3 Miles

Projection: NAD 1983 UTM Zone15N

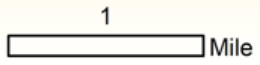
# Lake Caddo Invasive Vegetation Survey 2022



**TEXAS**  
PARKS &  
WILDLIFE

Inland Fisheries

Prepared by: Q. Dean  
T. J. Green and J. DeWyse

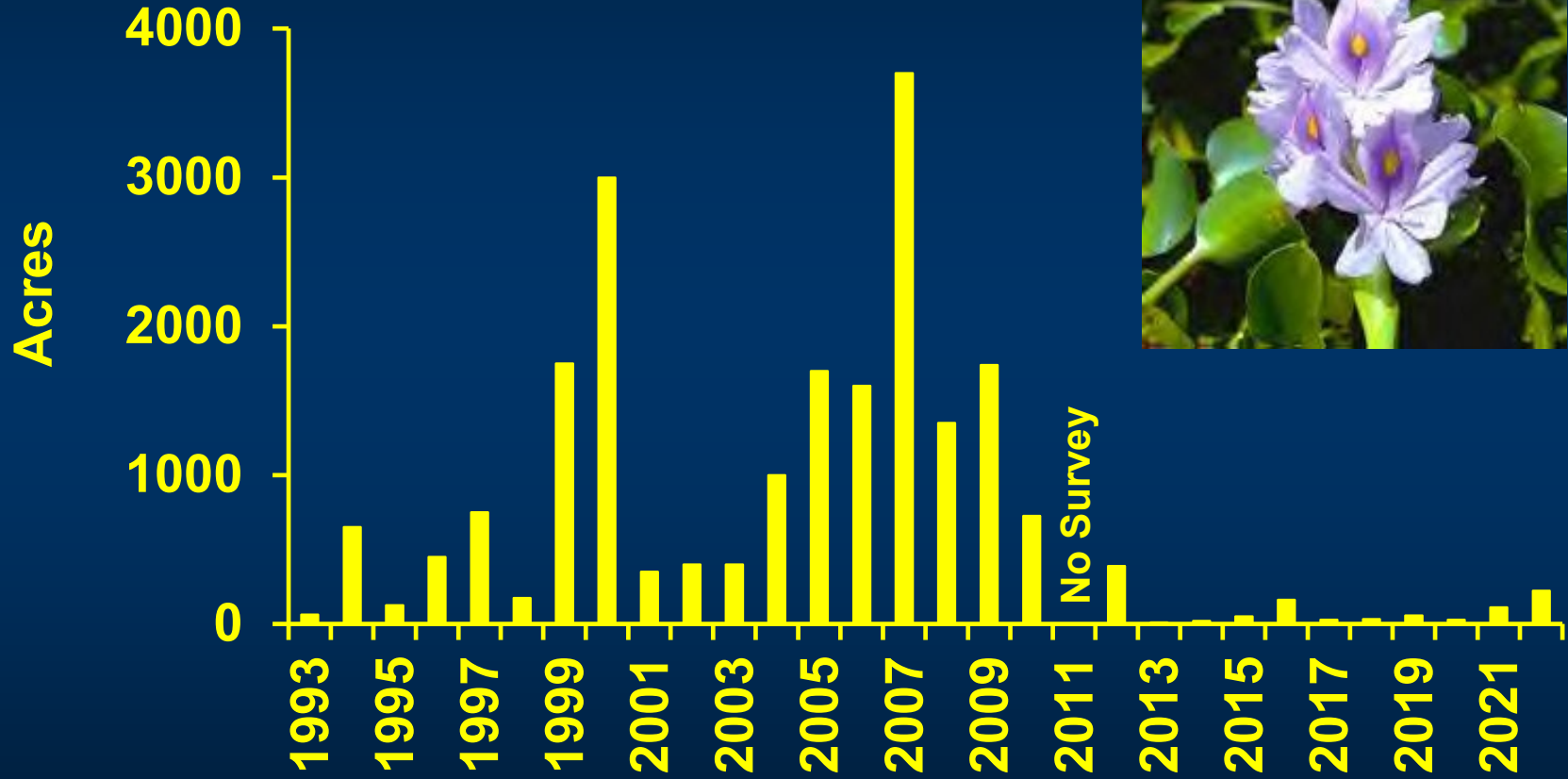




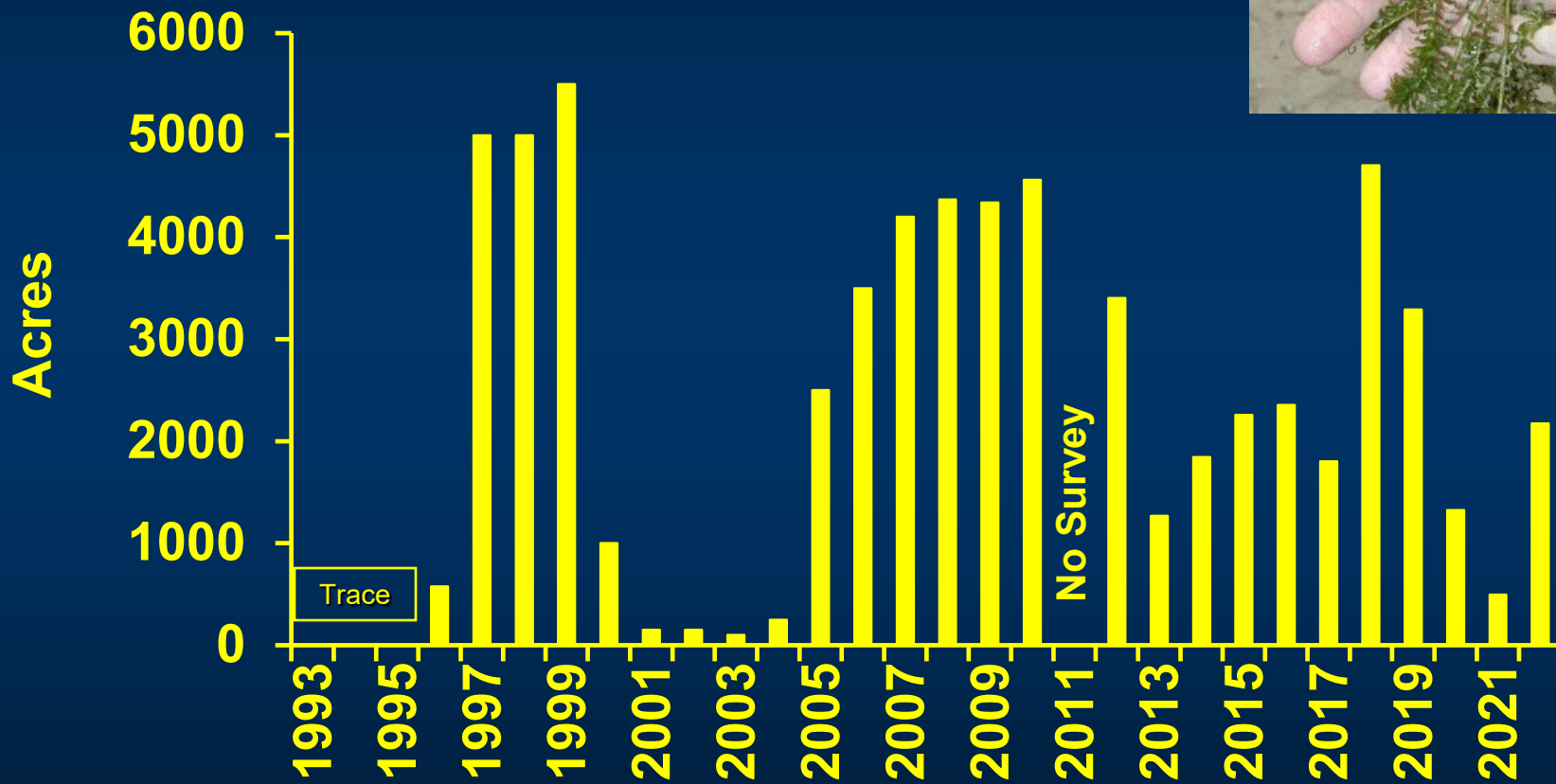
# Giant Salvinia Weevils

Photo Credit: USDA, Scott Bauer

# Water Hyacinth



# Hydrilla



# Crested Floating Heart

- Native of Asia
- Water garden
- Florida late 1990s
- Has shown invasive potential



## Crested Floating-Heart, Caddo Lake 2014



### Legend

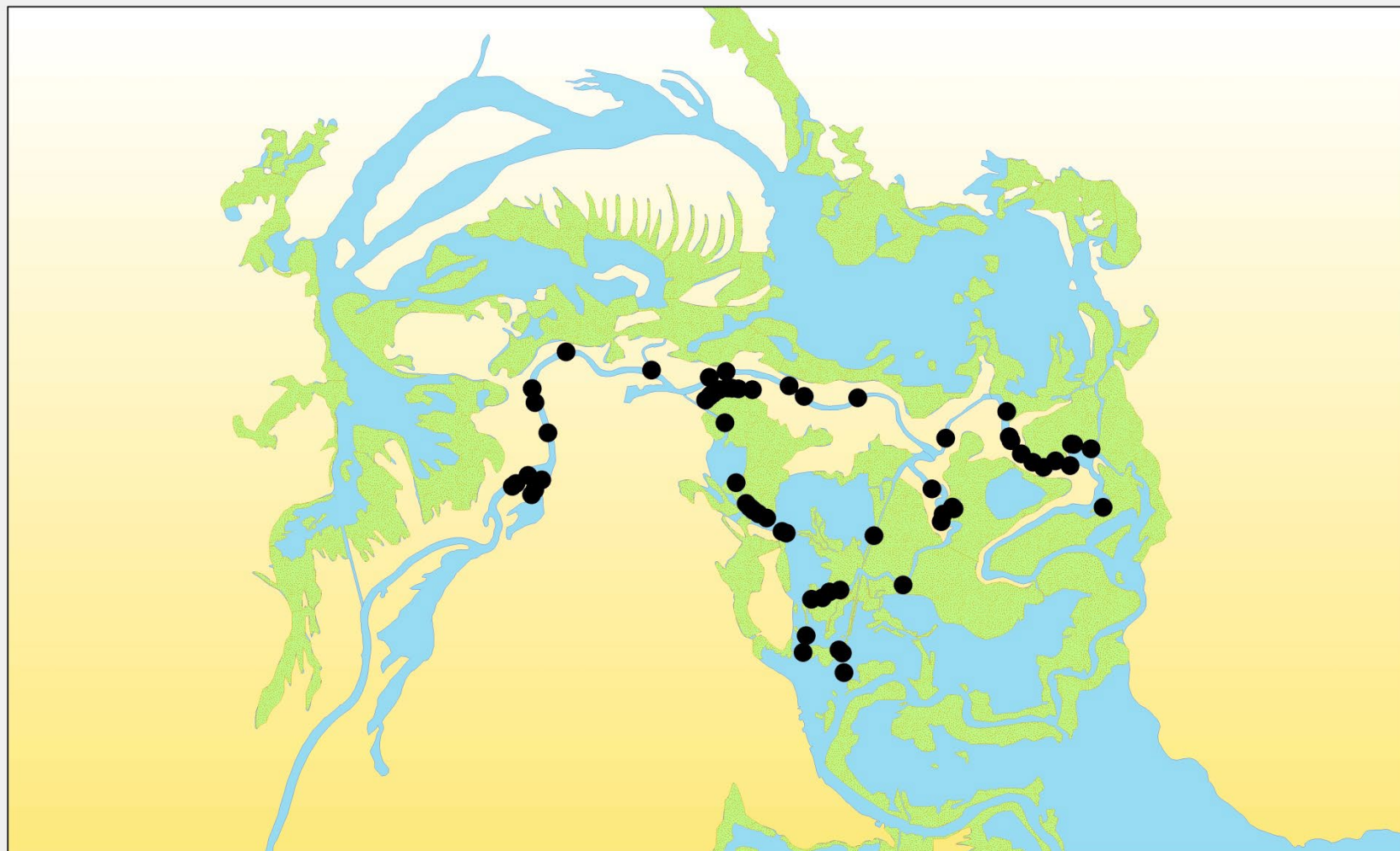
- Crested Floating Heart
- Cypress Trees
- Caddo Lake

Locations of Crested Floating-Heart surveyed on October 22, 2014

Herbicide treatment by TPWD Aquatic Habitat Enhancement Crew on October 28, 2014

Follow-up treatment planned for week of November 17-21, 2014

## Crested Floating-Heart, Caddo Lake 2015



### Legend

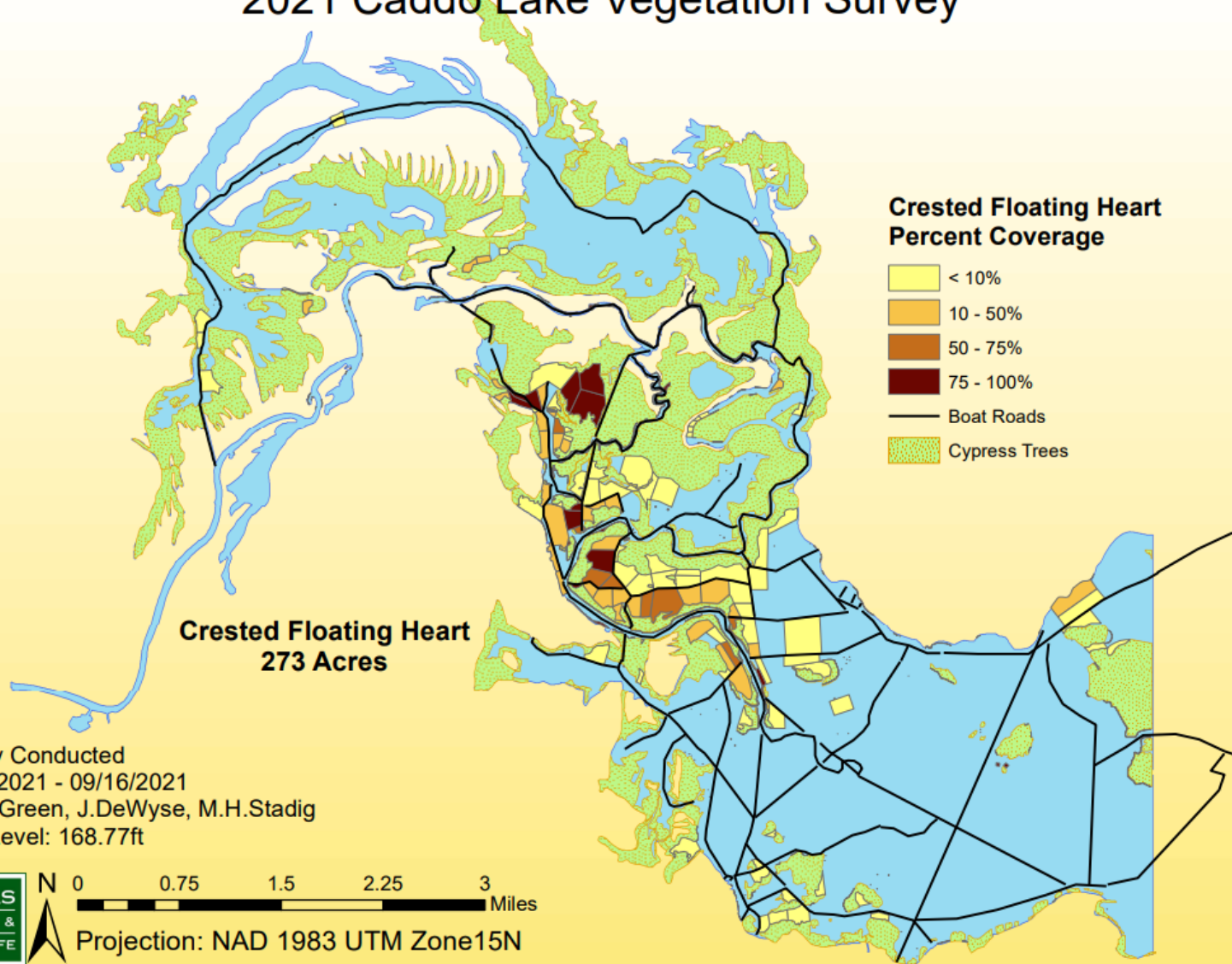
- Crested Floating Heart
- Cypress Trees
- Caddo Lake

**Locations of Crested Floating-Heart surveyd on September 15, 2015**



# Crested Floating Heart

## 2021 Caddo Lake Vegetation Survey



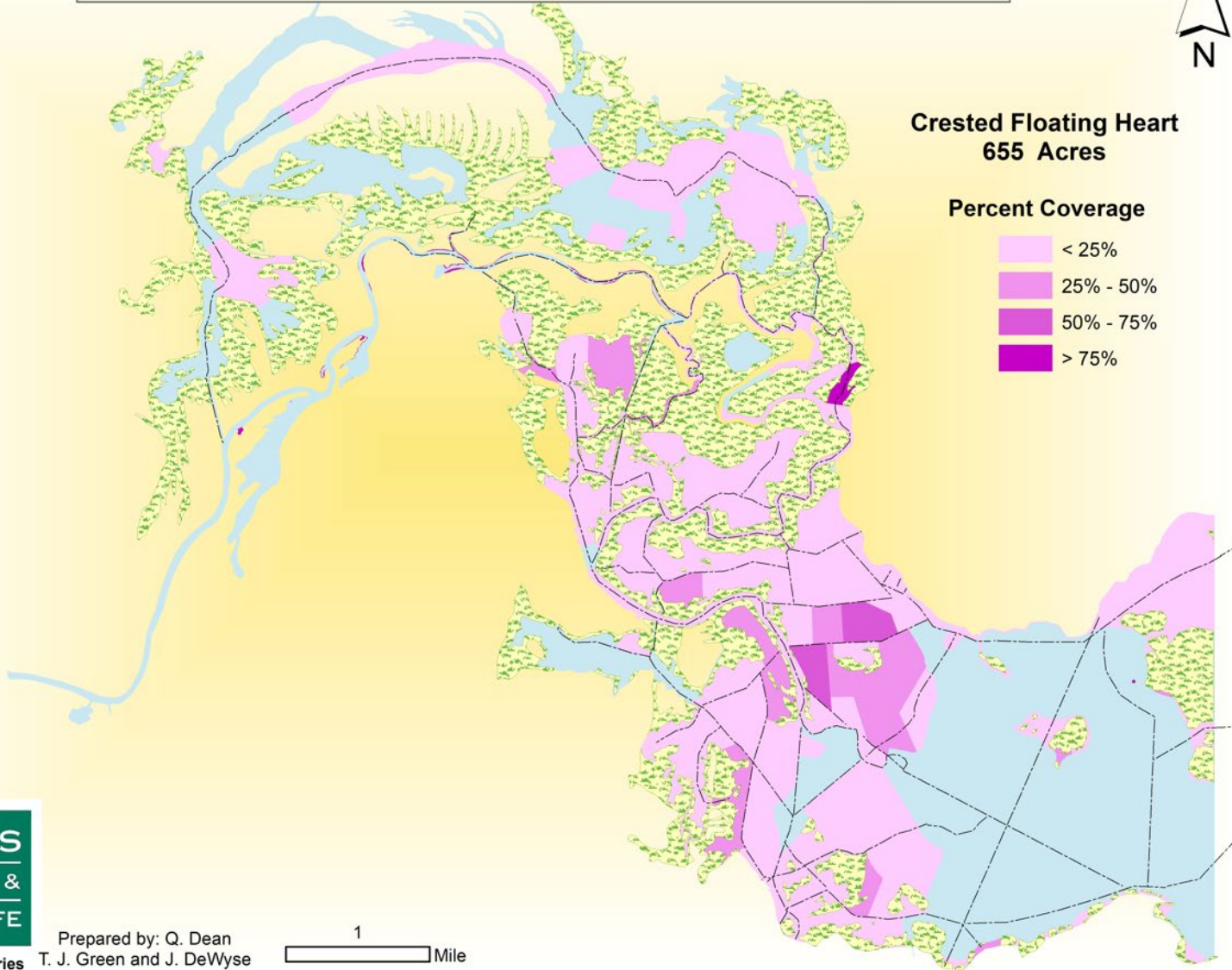
# Crested Floating Heart

Lake Caddo Invasive Vegetation Survey 2022



Crested Floating Heart  
655 Acres

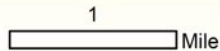
Percent Coverage



TEXAS  
PARKS &  
WILDLIFE

Inland Fisheries

Prepared by: Q. Dean  
T. J. Green and J. DeWyse



# Crested Floating Heart

- Refined management approach
  - New herbicide rate
  - Better success 2023





# ADVISORY

## GIANT SALVINIA IS IN THIS WATER BODY



### CLEAN

your boat, trailer and gear. Remove all plants and debris.

### DRAIN

all water from your boat and gear.

### DRY

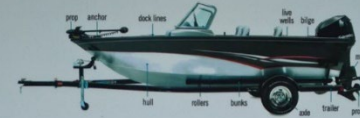
or power wash everything before entering another water body.

TAKE ACTION TO KEEP INVASIVE SPECIES FROM MOVING TO OTHER LAKES

## IT'S THE LAW

[TEXASINVASIVES.ORG/GIANTSALVINIA](http://TEXASINVASIVES.ORG/GIANTSALVINIA)

## INVASIVE SPECIES HIDE IN YOUR BOAT



**CLEAN** your boat, trailer and gear by removing all plants, animals and foreign objects.

**DRAIN** all water from the boat, including the motor, bilge, livewells and bait buckets.

**DRY** the boat and trailer for a week or more. If unable to let it dry for a week, wash it with a high-pressure washer and hot (140-degree), soapy water.

## IT'S THE LAW

**DON'T TRANSPORT INVASIVE SPECIES  
OR LEAVE THIS WATER BODY  
WITHOUT DRAINING ALL WATER.**

[www.texasinvasives.org](http://www.texasinvasives.org)

To report a violation, call 1 (800) 792-4263.



# PROTECT THE LAKES YOU LOVE. STOP INVASIVE SPECIES.

### CLEAN

all plants, mud and debris off your boat, motor, bait buckets, trailer and gear.

### DRAIN

all water from boat, motor, bait buckets and any compartments.

### DRY

boat and gear a week or more, or power wash with hot, soapy water before visiting another water body.



It is illegal to transport aquatic invasive species or to leave these waters without draining all water from your boat.

[tpwd.texas.gov/StopInvasives](http://tpwd.texas.gov/StopInvasives)

**Timothy.Bister@tpwd.texas.gov**  
**903-938-1007**

A scenic view of a swampy area, likely a bayou, with tall trees, water lilies, and a wooden observation tower on the right. The water is calm, reflecting the surrounding greenery. The sky is bright, and the overall atmosphere is peaceful and natural.

**TEXAS**  
**PARKS &**  
**WILDLIFE**